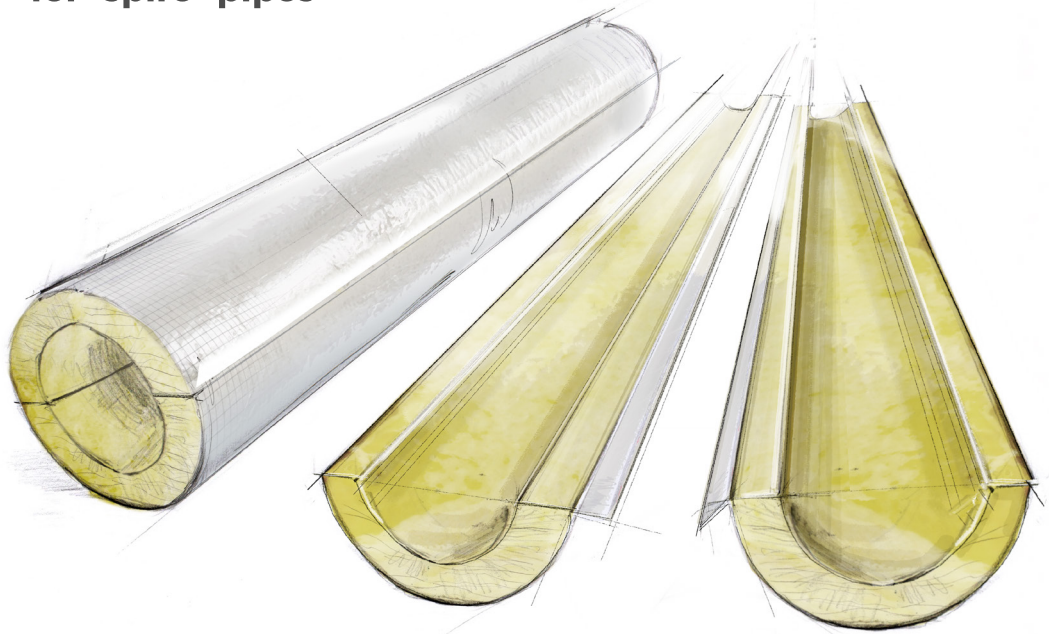


# r. **S**piro<sup>®</sup>A

Mineral wool pipe sections  
for "spiro" pipes



**Energy to live**

**ROHHE<sup>®</sup>**



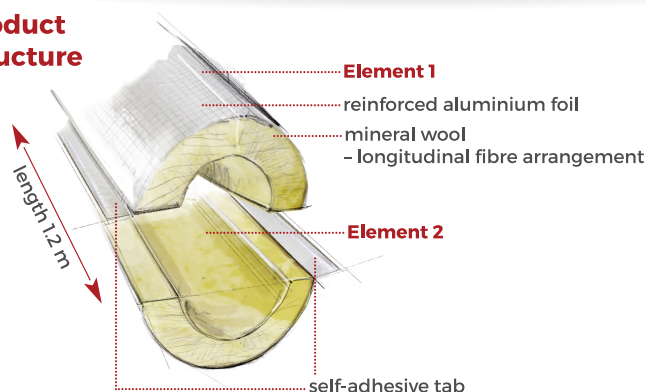
## Product

# r.Spiro®A

is a mineral wool pipe section covered with a cladding of reinforced aluminium foil. The mineral wool used has a longitudinal arrangement of fibres, giving the product rigidity and optimal thermal insulation and soundproofing properties. Thanks to its design and the materials used, the product exhibits an optimal ratio of weight to mechanical strength.

A single r.Spiro®A pipe sections consists of two identical elements connected with a wide, self-adhesive closing tab.

### Product structure



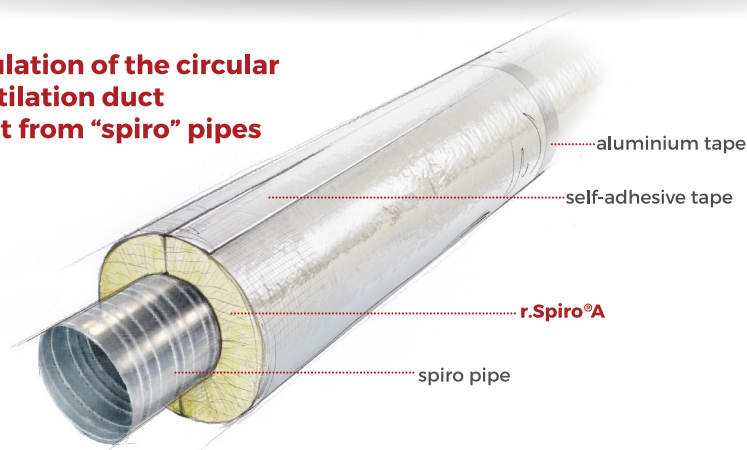
## Application

# r.Spiro®A

designed for thermal, anti-condensation and acoustic insulation of circular ventilation ducts built on the basis of "spiro" pipes. The size range of the pipe sections corresponds to the typical diameters of "spiro" pipes.

The installation of r.Spiro®A pipe sections consists in assembling two elements, prepared to the size of the insulated pipe. The two elements are then connected thanks to a wide self-adhesive tab. Such installation of r.Spiro®A is fast, reliable and simple, and the insulated system works optimally, looks clean and neat.

### Insulation of the circular ventilation duct built from "spiro" pipes




## Advantages of using r.Spiro®A

The installation of r.Spiro®A is so efficient and simple that, compared to installation based on traditional products, the time required to insulate the same section is even several times shorter. This contributes to a dramatic reduction in labour costs.



### Technical details

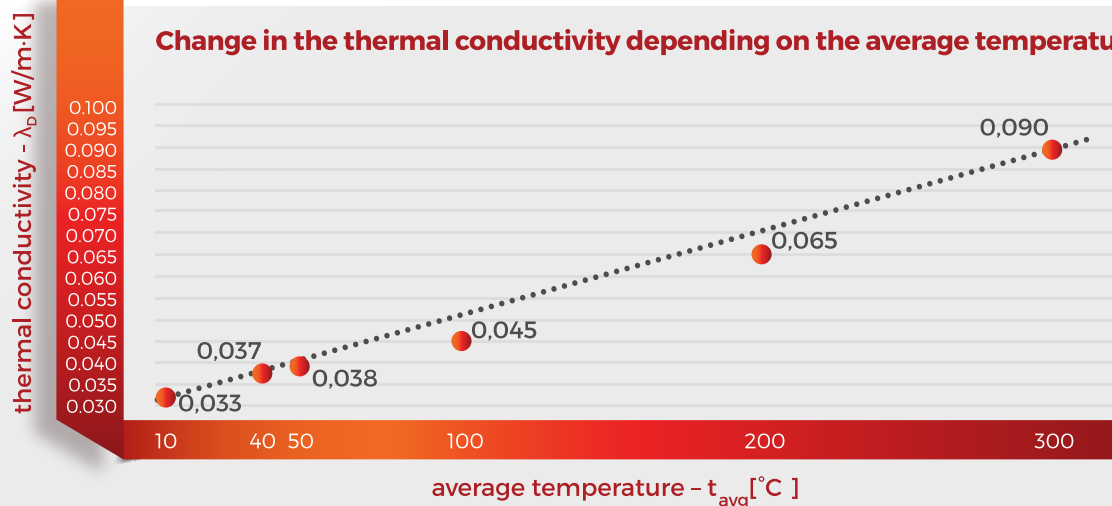
PARAMETER	VALUE	UNIT	SYMBOL	STANDARD
declared thermal conductivity (temp. 40°C)	0,037	W/m·K	$\lambda_D$	EN ISO 8497
reaction to fire	incombustible	class	A2/A <sub>2</sub> -s1,d0	EN 13501-1
maximum service temperature	300	°C	ST(+) <sub>300</sub>	EN 14707
short-term water absorption	≤ 1	kg/m <sup>2</sup>	WS1	EN 13472
diffusion resistance of water vapour	$s_d \geq 200$	m	MV2	EN 13469
wall thickness tolerance (for Do < 150 mm)	-5% lub -3mm/+5% lub +3mm	% lub mm	T8	EN 13467
wall thickness tolerance (for Do ≥ 150 mm)	-6% lub -5mm/+6% lub +5mm	% lub mm	T9	EN 13467
inner diameter tolerance (for Do < 150 mm)	-0 / +4	mm	-	EN 13467
inner diameter tolerance (for Do ≥ 150 mm)	-0 / +2% lub +5mm	% lub mm	-	EN 13467
content of chloride ions	≤ 10	mg/l kg	CL10	EN 13468
Product CE code for Do<150mm	MW-EN 14303-T8-ST(+) <sub>300</sub> -WS1-MV2-CL10			
Product CE code for Do≥150mm	MW-EN 14303-T9-ST(+) <sub>300</sub> -WS1-MV2-CL10			
Product Standard	PN-EN 14303:2009+A1:2013			
Environmental Product Declaration	02-12/2024			
Product Documents	<a href="http://www.rohhe.com/documents">www.rohhe.com/documents</a>			

### Values of declared thermal conductivity ( $\lambda_D$ ) at selected average temperatures

temperature [°C]

	10	40	50	100	200	300
$\lambda_D$ [W/m·K]	0,033	0,037	0,038	0,045	0,065	0,090

### Change in the thermal conductivity depending on the average temperature





## Packaging method

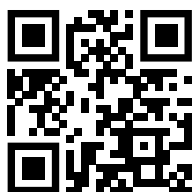
Cardboard boxes of **r.Spiro®A** pipe sections are laid vertically on a wooden pallet (0.8 x 1.2 m) in two layers. Depending on the size of the product, the pallet holds 12 boxes (0.4x0.4 m) or 8 boxes (0.6x0.4 m). The pallet may also be protected by an auxiliary LDPE hood on top and is additionally wrapped in stretch foil. This packaging method fully protects the product from damage during transportation and storage operations. It also allows for the safe stacking of factory-secured pallets in two layers.

January 2025

All **r.Spiro®A** pipe pipe sections are packed in cardboard boxes. For smaller sizes a box of 0.4 x 0.4 x 1.2 m is used, for larger sizes a box of 0.6 x 0.4 x 1.2 m is used. Each box has two special, perforated tear-off windows giving convenient access to its contents.

Opening the windows does not affect the structure of the side walls of the box. To facilitate the transportation of individual packages, handles are cut out on the sides of each box. The box provides viable protection against both dirt and mechanical damage.

ROHHE Partner:



[www.rohhe.com](http://www.rohhe.com)

**ROHHE Sp. z o.o.**

05-555 Tarczyn, Al. Krakowska 19A

tel. +48 22 299 88 33, [biuro@rohhe.pl](mailto:biuro@rohhe.pl)

Orders: 736 233 377, [zamowienia@rohhe.pl](mailto:zamowienia@rohhe.pl)

Logistics: 736 233 372, [logistyka@rohhe.pl](mailto:logistyka@rohhe.pl)

Sale - Poland: 736 233 371, 736 233 375, 797 654 015, 793 500 140,

736 233 378, 736 233 374, [sprzedaz@rohhe.pl](mailto:sprzedaz@rohhe.pl)

Sale - Export: 736 233 379, [export@rohhe.pl](mailto:export@rohhe.pl)



**ROHHE®**